

## HPV GENOTYPE

### AMPLI-P-genotype

Cat. n. 1.111/G

The infection by HPV (Human Papilloma Virus) is one of the main cause of cervical intraepithelial neoplasia and of the ano-genital carcinoma. Among the different types of HPV that infect the genital and anal mucosa, the 16,18 and 33 have been detected mainly in invasive cervical carcinoma; the 6 and 11 are been related mainly to benign neoplasia.

The multiplex PCR (M. PCR) is a technique that allows the simultaneous amplification of many genes. Moreover it allows to detect multiple infections by different pathogenic agents

The Amply-P-genotype Set HPV genotype kit has been optimized in order to detect the 6, 11, 16, 18 and 33 genotypes of Papilloma virus in biological samples. The amplified region is the E6.

**Principles of assay:** A) Extraction of genomic DNA B) amplification C) detection on agarose gel.

**Applicability:** on extracted and purified DNA of omogenate tissue and cells preparations

**Tests:** 40.

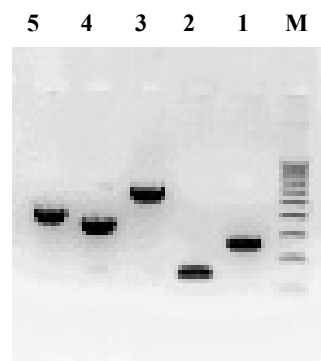
### REAGENTS AND STORAGE

#### AMPLIFICATION

Mix PCR HPV 6,11,16,18,33	-20°C
H <sub>2</sub> O sterile	-20°C
Taq Polymerase (5U/μl)	-20°C
Positive control HPV	

**Stability:** over 12 months if correctly store.

### ANALYSIS FOR RESULTS



M	marker 100 bp ladder	
1)	263 bp for type	6
2)	144 bp for type	11
3)	601 bp for type	16
4)	360 bp for type	18
5)	413 bp for type	33

#### References:

- Journal of Clinical Microbiology* **33**: 690-695 (1995).  
*Journal of Virology* **69**: 3074-3083 (1995)  
*Journal of Investigative Dermatology* **105**: 367-371 (1995)  
*Virology* **184**: 492-503 (1991)